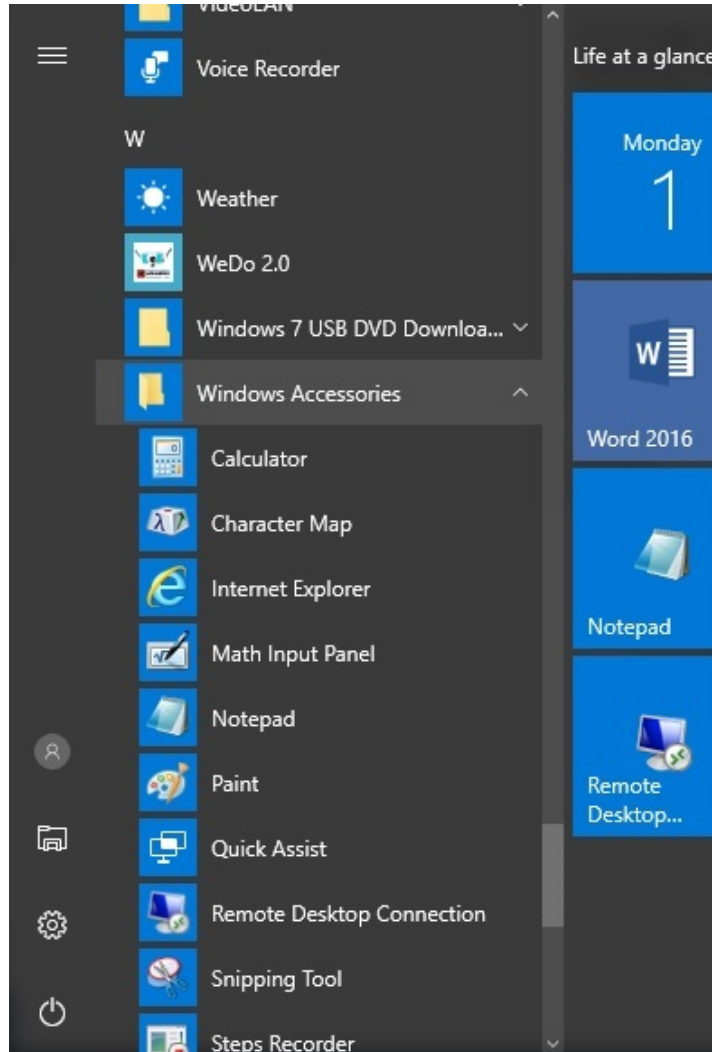
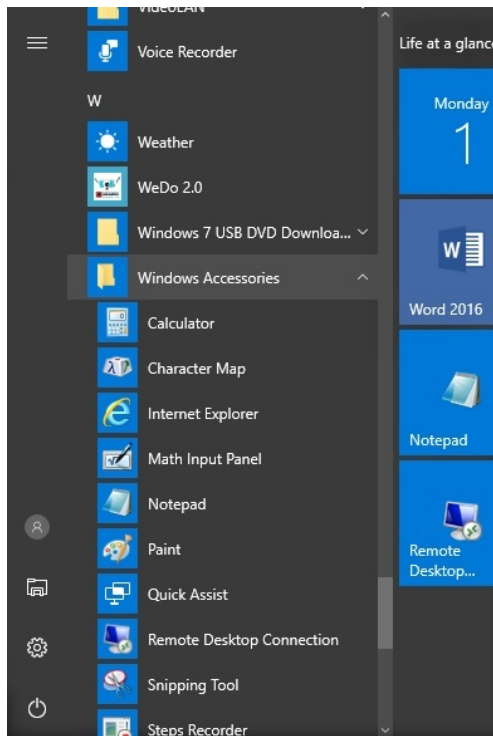


## Remoting into your Campus Computer from Off-Campus

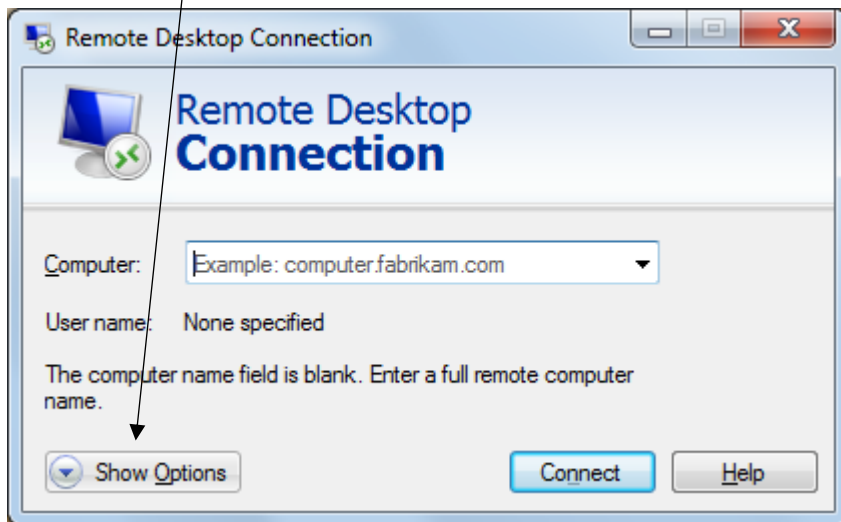
-Go to Start Button->Windows Accessories



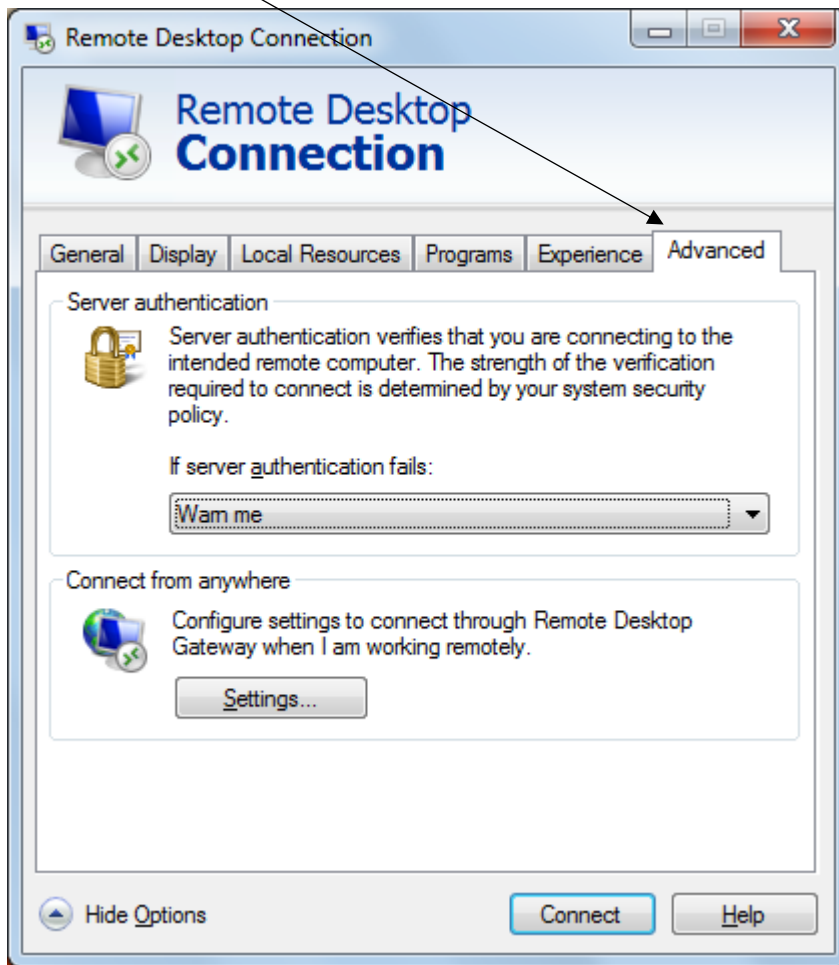
-Then Remote Desktop Connection



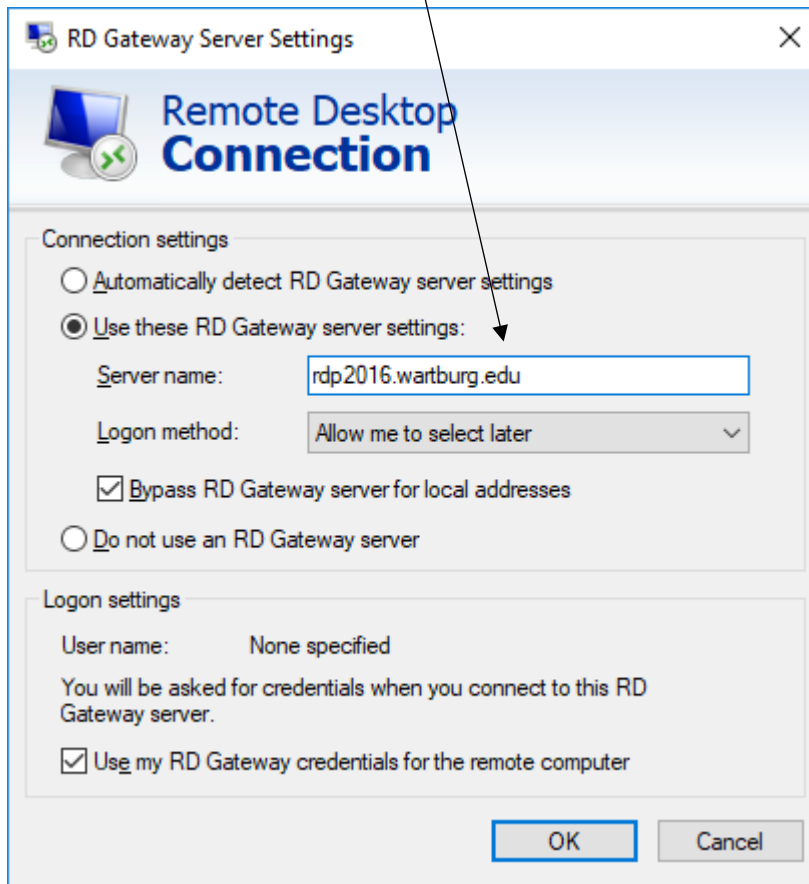
-Click on "Show Options"



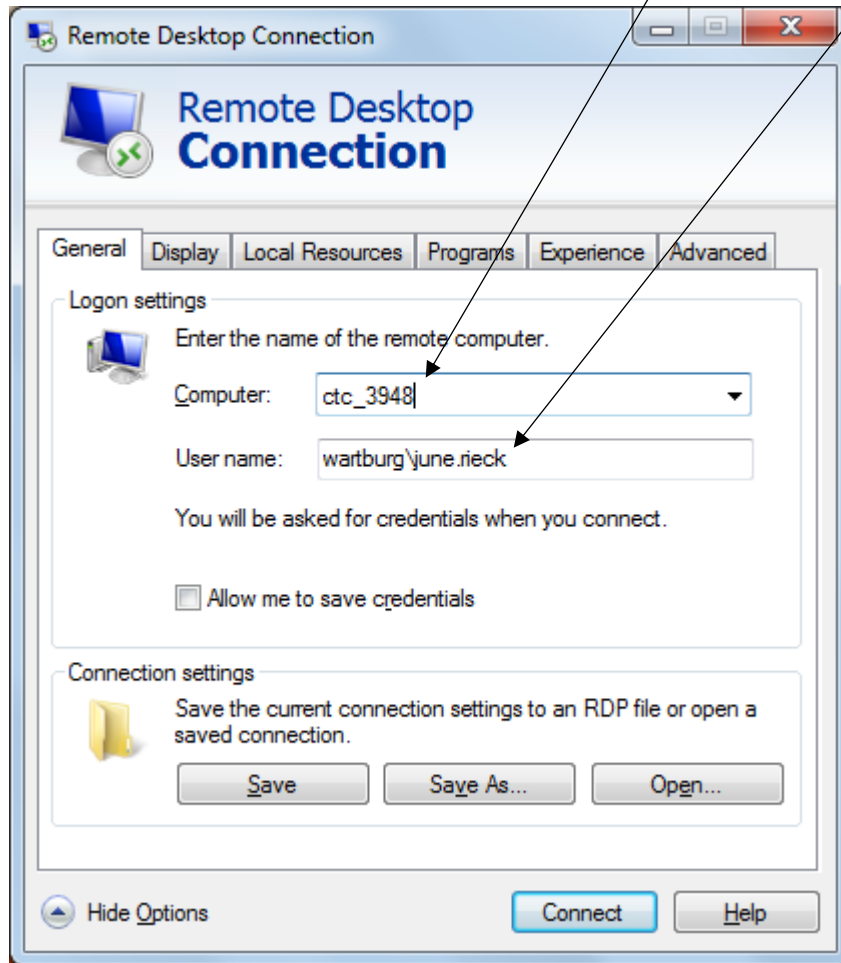
-Go to the "Advanced" tab



-Then "Settings" & type **rdp2016.wartburg.edu** into the "Server name:" box and click "OK"

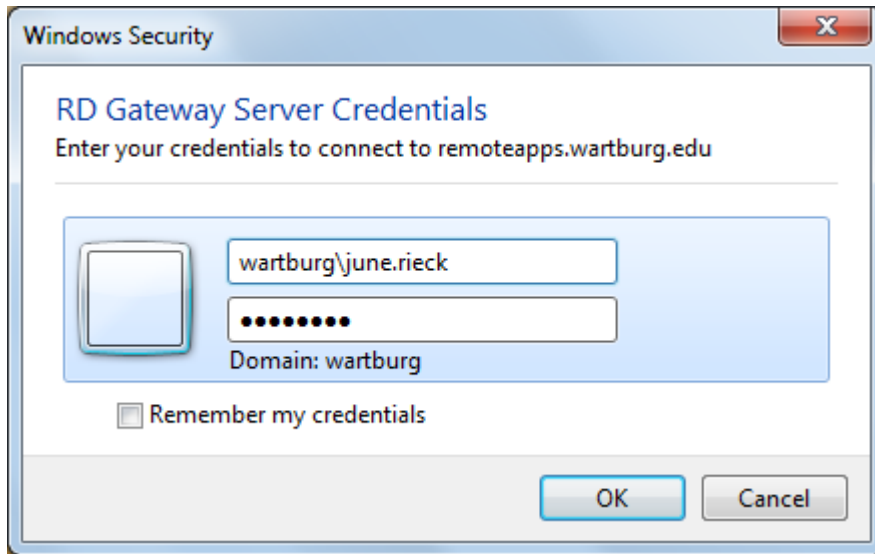


-Go back to the "General" tab and put the name of your computer into the "Computer" box and also put your name in the "User name" in the following format: `wartburg\firstname.lastname`



-Click "Connect"

-Put in your username and password into the window that pops up and click "OK". (Be sure and put your name in as wartburg\firstname.lastname)



-You will get a second login window



-Click on "Use another account" and put in your credentials again and click "OK"



Give it a little time but it should then log into your computer. (The first time it asks for your username, it is accessing the Wartburg network. The second time is when it's logging into your computer)